

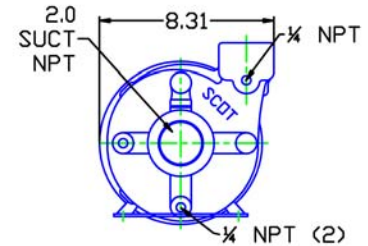
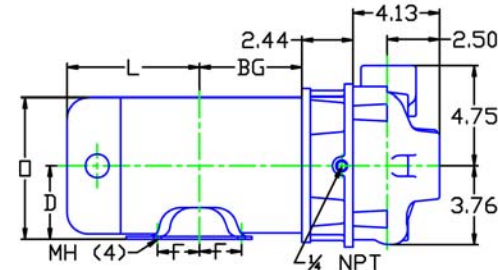
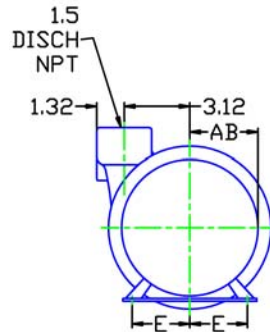
#### MOTOR DIMENSIONS

NEMA PREMIUM EFFICIENT JM FRAME 3 PHASE 3500 RPM

| HP  | Type | Frame | D    | E    | F    | O    | AB   | BG   | L    | MH   |
|-----|------|-------|------|------|------|------|------|------|------|------|
| 2,3 | ODP  | JM145 | 3.50 | 2.75 | 2.50 | 6.77 | 5.61 | 5.38 | 4.12 | 0.34 |
| 5   | ODP  | JM182 | 4.50 | 3.75 | 2.25 | 8.44 | 6.74 | 5.75 | 5.12 | 0.41 |
| 2   | TEFC | JM145 | 3.50 | 2.75 | 2.50 | 7.00 | 6.25 | 5.06 | 6.34 | .34  |
| 3   | TEFC | JM182 | 4.50 | 3.75 | 2.25 | 8.85 | 7.57 | 5.01 | 7.14 | .41  |
| 5   | TEFC | JM184 | 4.50 | 3.75 | 2.75 | 9.34 | 7.57 | 5.51 | 7.64 | .41  |

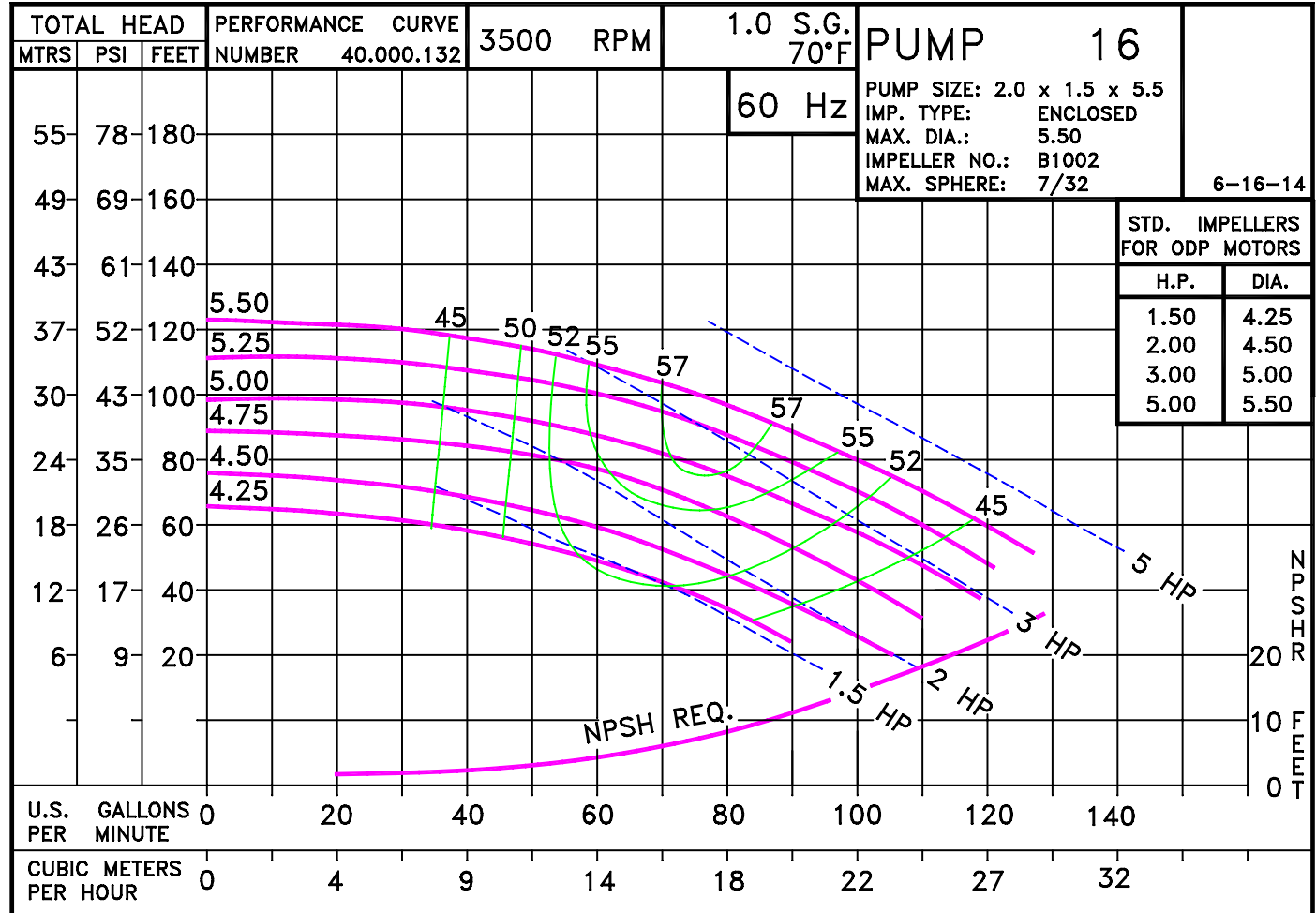
D016JM145

DRAWING DEPCITS 145JM 3.0HP ODP MOTOR



ALL DIMENSIONS IN INCHES.

DRAWING REPRESENTS APPROXIMATE PUMP DIMENSIONS. AUTOCAD DRAWING TO SCALE AVAILABLE FROM FACTORY.



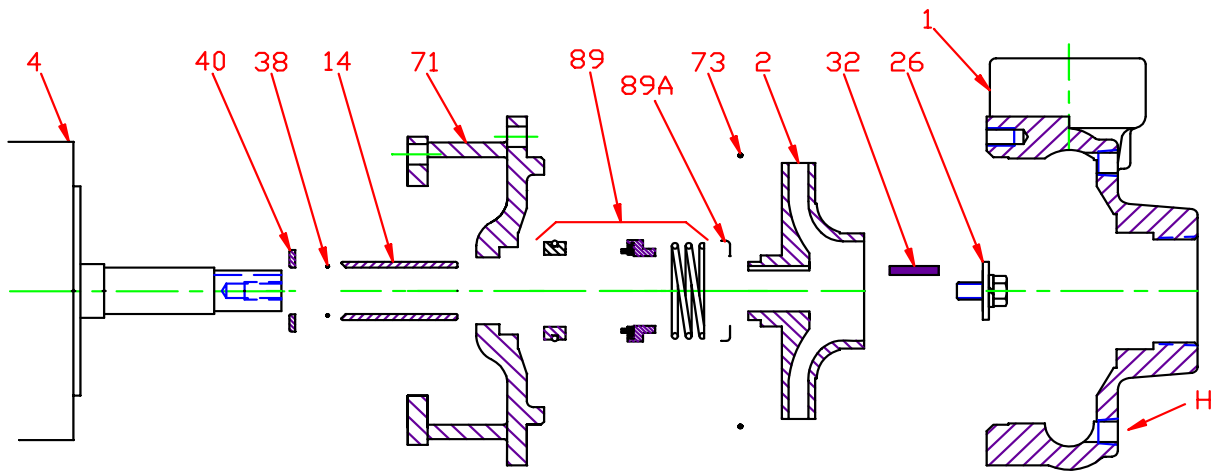
01603DP

D016JM145  
0163500

# 16 JM

0163500JM  
81.000.921 G16

# Pump 16 • Iron • JM Frame • 3500 RPM

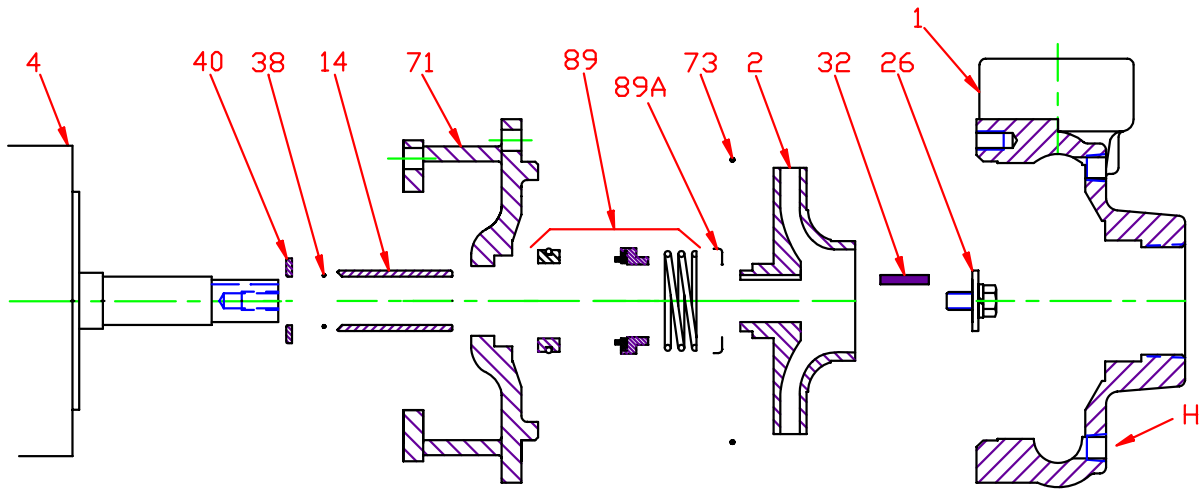


| KEY NO.           | PART NAME   | PUMP NO. 16  |
|-------------------|---|--------------|
| 1                 | CASE, IRON, 2 x 1.5 NPT                           | 130.000.181X |
| 2                 | IMPELLER, 7/8" KEYED, ENCLOSED, SPECIFY DIAMETER: |              |
|                   | CIBR  | 131.000.826  |
|                   | IRON  | 137.000.127  |
|                   | BRONZE  | 131.000.808  |
| 4                 | MOTOR, JM140/180                                  | See Chart    |
| 14*               | SHAFT SLEEVE, BRONZE                              | 110.000.178  |
|                   | SHAFT SLEEVE, STAINLESS                           | 110.000.192  |
| 26*               | IMPELLER RETAINER, STAINLESS                      | 118.000.111A |
| 32*               | KEY, STAINLESS                                    | 102.000.102  |
| 38*               | O-RING, SHAFT, BUNA                               | 116.000.117  |
|                   | O-RING, SHAFT, VITON                              | 116.000.105  |
| 40*               | FLINGER, STAINLESS                                | 104.000.165  |
| 71                | ADAPTER, IRON, JM140/180                          | 132.000.194X |
| 73*               | GASKET, CASE, BUNA                                | 116.000.146  |
| 89*               | 1½" SEALS:  |              |
|                   | BN-CARB/CM  | 101.000.168  |
|                   | VN-CARB/CM  | 101.000.191  |
|                   | VN-CARB/SIL                                       | 101.000.175  |
|                   | VN-SIL/SIL  | 101.000.204  |
|                   | EPDM-CARB/SIL                                     | 101.000.175B |
|                   | EPDM-SIL/SIL                                      | 101.000.204A |
| 89A*              | SEAL RETAINER                                     | 104.000.175  |
| --                | ° REPAIR KITS:                                    |              |
|                   | BN-CARB/CM SEAL                                   | 118.000.343  |
|                   | VN-CARB/CM SEAL (S)                               | 118.000.343A |
|                   | VN-CARB/CM SEAL                                   | 118.000.343M |
|                   | VN-CARB/SIL SEAL                                  | 118.000.343B |
|                   | VN-SIL/SIL SEAL (S)                               | 118.000.343F |
|                   | EPDM-CARB/SIL SEAL                                | 118.000.343D |
| EPDM-SIL/SIL SEAL | 118.000.343J                                      |              |

\* DENOTES COMPONENTS INCLUDED IN REPAIR KIT.

° ALL REPAIR KITS INCLUDE THE BRONZE SHAFT SLEEVE EXCEPT THE (S) INDICATED, WHICH IS STAINLESS WITH VITON SHAFT O-RING.

**Pump 16 • Iron • JM Frame • 3500 RPM**



| CONSTRUCTION OPTIONS |                                |                 |               |              |
|----------------------|--------------------------------|-----------------|---------------|--------------|
| KEY                  | PART NAME                      | STANDARD FITTED | BRONZE FITTED | ALL IRON     |
| 1                    | Case                           | Iron            | Iron          | Iron         |
| 2                    | Impeller                       | CIBR            | Bronze        | Iron         |
| 14                   | Shaft Sleeve                   | Bronze          | Bronze        | Stainless    |
| 26                   | Imp. Retaining Ass'y           | Stainless       | Stainless     | Stainless    |
| 32                   | Key                            | Stainless       | Stainless     | Stainless    |
| 38                   | Shaft O-Ring                   | BUNA            | BUNA          | BUNA         |
| 40                   | Flinger                        | Stainless       | Stainless     | Stainless    |
| 71                   | Adapter                        | Iron            | Iron          | Iron         |
| 73                   | Gasket, Case                   | BUNA            | BUNA          | BUNA         |
| 89                   | Mechanical Seal, Type 21 BN-CM | Standard        | Standard      | Standard     |
| 89A                  | Seal Retainer                  | Stainless       | Stainless     | Stainless    |
| H                    | Plug, Drain                    | Brass           | Brass         | Plated Steel |

CIBR: Cast iron with brass wear ring

E017JM

E11

C0163500JM